



Switzerland.
by train, bus and boat.

11D8N GRAND TRAIN TOUR OF SWITZERLAND

ECSTTS | Summer Apr – Oct 2024

COUNTRY FOCUSED

I WAS
HERE!

All aboard for an enchanting Swiss train journey that seamlessly blends scenic rides with the charm of Swiss cities, alpine resorts, and iconic landmarks along the way.

GLACIER EXPRESS



Itinerary
recommended by
Switzerland Tourism.



Wifi
Router



Whisper
System



PACE



Relaxed

Active

HIGHLIGHTS

ZÜRICH

- Old Town
- Münsterbrücke
- Fraumünster
- Lindenhof
- National Museum
- Bahnhofstrasse

LUCERNE

- Lake Lucerne Boat Ride
- Mt Rigi
- Old Town
- Old Chapel Bridge
- Lion Monument
- Glacier Garden
- Bucherer

BERNESE OBERLAND

- Interlaken
- Ballenberg Open-Air Museum
- Harder Kulm
- Gstaad

MONTREUX

- Freddie Mercury Statue
- Steamer Cruise
- Chillon Castle

ZERMATT

- Gornergrat
- View of Matterhorn
- Riffelsee Lake
- Matterhorn Museum
- Zermatt Village

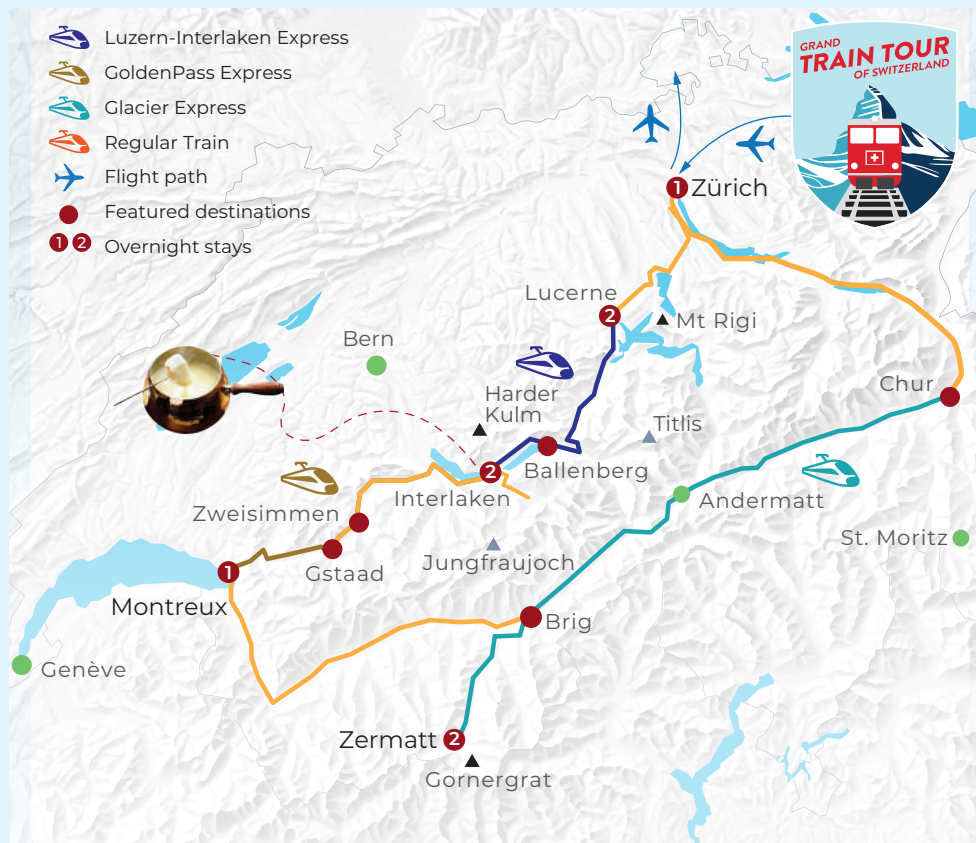
CHUR

- Old Town



EXCLUSIVES

- Premium Panoramic Trains: Lucerne-Interlaken Express, GoldenPass, Glacier Express
- Mountain Excursion: Gornergrat, Harder Kulm, Rigi
- Hotel Door-to-door Luggage Delivery Service



DELICACIES

Meal Plan

8 Breakfasts, 4 Dinners

Specialities

- Pork Cordon Blue
- Swiss Fondue + Wine

4★ HOTELS

LUCERNE Astoria

INTERLAKEN Metropole

MONTREUX Eurotel

ZERMATT Ambassador

ZURICH Dorint Airport

*Note: Hotels subject to final confirmation. Should there be changes, customers will be offered accommodation similar to this list.



LUCERNE-INTERLAKEN EXPRESS INTERIOR

01 HOME ▶ ZURICH

Meals on Board
Assemble at the airport and depart for **Zurich**.

02 ZURICH ▶ LUCERNE

Hotel Dinner
Explore Zurich with a leisurely stroll over **Münsterbrücke**, a pedestrian bridge over the Limmat River. See the **Fraumünster**, a Gothic-style church, and conclude your tour at **Lindenhof**, a hilltop park with stunning views of Old Town and the river. Continue to the **National Museum Zurich** for a journey through Swiss history. Conclude at **Bahnhofstrasse**, a world-renowned shopping street.
Note: The Zurich museums are closed on Mondays; in case of closure, an alternative arrangement will be made.

03 LUCERNE

Breakfast
Experience a unique journey today with a boat and rack railway combo to **Mount Rigi**, the Queen of the Mountains. Take a train to **Arth-Goldau**, then board the cogwheel railway to ascend to 1,797m at **Rigi Kulm**, offering stunning views. Afterward, enjoy a **scenic boat** cruise back to **Lucerne**, passing fjord-like waters. Explore iconic landmarks like the **Chapel Bridge** and **Lion Monument**, visit the charming **Old Town**, and don't miss Switzerland's largest duty-free store, **Bucherer**. Visit the **Glacier Garden** for a glimpse of Ice Age glaciers and kettle basins

04 LUCERNE ▶ INTERLAKEN

Breakfast, Dinner –
Swiss Fondue + Wine
Embark on the **Luzern – Interlaken Express**, admire the stunning mountain scenery, serene lakes, and cascading waterfalls. Visit to the **Ballenberg Open-Air Museum**, covering 66 hectares with over 100 original buildings showcasing Swiss



HARDER KULM - TOP OF INTERLAKEN

diverse heritage through authentic structures, farm animals, and traditional crafts. Conclude your day with a funicular ride to **Harder Kulm** – Top of Interlaken (1322m above sea level) for breathtaking views of Interlaken, lakes Thun and Brienz, and the surrounding area.
Note: The Ballenberg Open-Air Museum, operate from 11 Apr to 27 Oct, an alternative replacement will be made if closed.

05 INTERLAKEN (FREE DAY)

Breakfast
Enjoy a free day exploring the scenic mountain surroundings or ops some various sports activities in Interlaken. Consider our optional trip to Jungfrauoch, the "Top of Europe," for awe-inspiring alpine views that promise an unforgettable experience.
Optional: Jungfrauoch

06 INTERLAKEN ▶ GSTAAD ▶ MONTREUX

Breakfast, Dinner - Grill Trout Fillet
Travel along Lake Thun and through the picturesque Simmental Valley to reach **Gstaad**. Explore this luxurious resort town, celebrated for its charming chalets and favored by celebrities. Then, board the nostalgic **Belle Époque carriage** of the **GoldenPass Line**, a historic train with panoramic windows

07 MONTREUX ▶ ZERMATT

Breakfast, Dinner - Pork Cordon Blue
Hop on a historic **Steamer Cruise** on **Lake Geneva** to Chillon. Marvel at the Swiss Riviera's picturesque lakeside villages and mountains. Visit **Chillon Castle**, a medieval fortress on the water, with a history dating back to the 12th century. Optionally, consider an optional to the Aletsch Glacier, the largest in the Bernese Alps.
Note: If the specific cruises is unavailable or not operated, it will be replaced by standard train.
Optional: Aletsch Glacier



BALLENBERG-OPEN-AIR-MUSEUM



RAILWAYS TO MT RIGI

11D8N Grand Train Tour of Switzerland



GOLDENPASS PANORAMIC

BELLE ÉPOQUE INTERIOR

08 ZERMATT ► GORNERGRAT ► ZERMATT

Breakfast

Begin your day in the charming village of **Zermatt**, and embark on a cog railway to the **Gornergrat**. The ride alone offers countless picture postcard scenes such as chalets typical of the Valais, and a stunning mountain panorama. Upon reaching the summit at 3089m, indulge in the spectacle of iconic peaks such as the **Matterhorn** and **Monte Rosa**. Descend to **Riffelberg**, and alight to see the famous **Riffelsee Lake** where the famous Matterhorn is reflected in calm waters. Visit the **Matterhorn Museum** for insights into Zermatt's history before enjoying free time to explore the village at your leisure.



GORNERGRAT MATTERHORN, ZERMATT

Note: If the specific train is unavailable or under maintenance, it will be replaced by a regular train, and the visit to Chur will be replaced with Bern's Old Town.

09 ZERMATT ► CHUR ► ZURICH

Breakfast

Discover the breathtaking beauty of the Swiss Alps aboard the **Glacier Express**, renowned as the world's slowest express train. Enjoy 4hrs of marveling at stunning glaciers and picturesque landscapes, including **Oberalp Pass** and **Rhine Gorge**. Reach **Chur**, Switzerland's oldest city, explore the charming **Old Town**.

10 ZURICH ► HOME

Breakfast, Meals on Board

Enjoy the rest of the day at leisure till it is time to transfer to the airport for your flight home.

11 HOME SWEET HOME

We hope you enjoyed your vacation with our company and we look forward to seeing you again for your next trip.

Suggested Excursions:

Additional activities that complement your holidays will be at your own discretion and is entirely optional.

*Minimum group size may apply.

- Aletsch Glacier + Lunch: CHF159 / CHF119
- Jungfrauoch + Lunch: CHF245 / CHF215
- Rhine Falls + Lake Titisee: CHF98

Service Fee Guideline: (based on 11D8N)

- CHF88 per person

Notes:

- A minimum group size of 15 passengers is required for a confirmed departure.
- The sequence of the itinerary, flight schedules and hotels are subject to change without prior notice in the event of unforeseen circumstances.
- During major events, accommodation may be re-located to outside of the city or in another city without prior notice.
- If the specific trains is unavailable or undergoing maintenance, it will be replaced by standard train.
- Mountain activities are subject to weather conditions.
- No portorage service/transfer service will be provided on the arrival/departure day.
- Portorage luggage is limited to one piece per person.